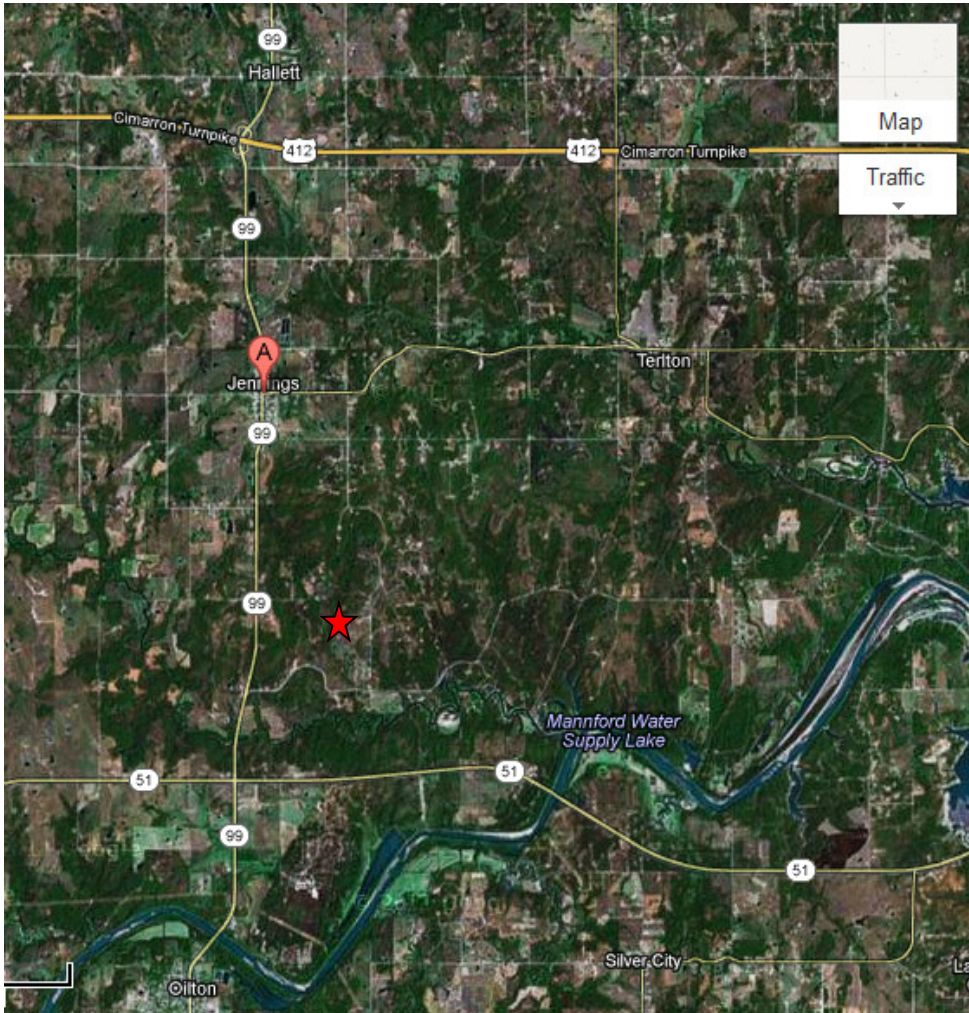


## Directions to the Hombu Dojo



GPS coordinates

[+36° 8' 53.00", -96° 33' 30.00"](#)

Note:

Cell phones generally don't work well in the valley, so any phone calls should be prior to exiting hwy 99.

★ = Hombu dojo

"A" = Jennings, OK

If coming from Tulsa:

- Take hwy 412 going west
- At hwy 99 exit (toll gate), head south
- Go THROUGH Jennings, about 2 miles south of Jennings, turn east/left onto W. 11th St. S. at the "M.O. Smith Camp and Wheeler Chapel" sign. This is a gravel road. If you reach hwy 51, you've gone two miles too far.
- Turn right into Holzbauer's driveway and follow signs to parking area.

From OKC area:

- Take I-44 heading east
- Take exit 179 toward Drumright/Stroud/Hwy 99 and merge to hwy 377
- Turn right/east onto hwy 33 E/hwy 99 NE
- Take hwy 99 N towards
- After passing through the hwy 51 intersection, you are about two miles away from turning right/east onto W. 11th St. S. (gravel road). You'll see the at the "M.O. Smith Camp and Wheeler Chapel" sign.
- Turn into the Holzbauer's driveway and follow the signs to the parking area.

